



MENÚ

Open
Hours

DESAYUNOS

| | |
|--------------------------|--------|
| HUEVOS AL GUSTO | \$9.2 |
| OMELETTE CEBOLLA & BACON | \$15.5 |
| HUEVOS NAPOLITANOS | \$12.5 |
| WAFFLE SANDWICH | \$10.2 |

SOPAS Y CREMAS

| | |
|------------------------------|--------|
| SOPA DE LENTEJAS | \$12.5 |
| SOPA DE CEBOLLA | \$10.3 |
| SOPA DE POLLO | \$9.6 |
| CREMA DE POLLO Y CHAMPIÑONES | \$11.9 |



PARA COMPARTIR

| | |
|-----------------------|--------|
| YUQUITAS | \$9.8 |
| DEDITOS DE QUESO 5UNI | \$10.3 |
| NACHOS ÁRABES | \$11.3 |
| MEZZA | \$56.2 |
| MEZZA CARIBEÑA | \$36.2 |
| MEDIA MEZZA CARIBE | \$26.7 |
| HUMMUS CON TOCINETA | \$35 |
| MEDIO HUMMUS TOCINETA | \$25.1 |

POTES

| | |
|--------|--------|
| ÁRABE | \$21.1 |
| KAFTA | \$26.2 |
| POLLO | \$18.7 |
| VEGGIE | \$13.9 |

ENSALADAS

| | |
|--|--------|
| FATUSH | \$23 |
| <i>Lechuga, pepino, rábano, perejil, tomate, crotones de pan con aderezo de aceite de oliva, un toque de sal y pimienta.</i> | |
| PORTOBELLO | \$35.7 |
| <i>Lechuga, tomate cherry, aceitinas moradas y negras, champiñón portobello, queso feta, crotones de pan árabe con aderezo de balsámico.</i> | |

| | |
|--------|-------|
| FRUTAS | \$9.3 |
|--------|-------|

QUIBBES

| | |
|-------------|--------|
| ASADO | \$30.2 |
| CON TAHINE | \$6 |
| CRUDO | \$24.7 |
| TRADICIONAL | \$5.7 |



MENÚ

Open Hours

BROCHETAS

POLLO CON PIMENTONES ASADOS \$25.3

POLLO CON CHAMPIÑONES GRATINADOS \$25.3

ARROCES

AL PESCADOR \$31.9

CERDO (ESTUDIANTE) \$25.1

DE ALMENDRAS \$35

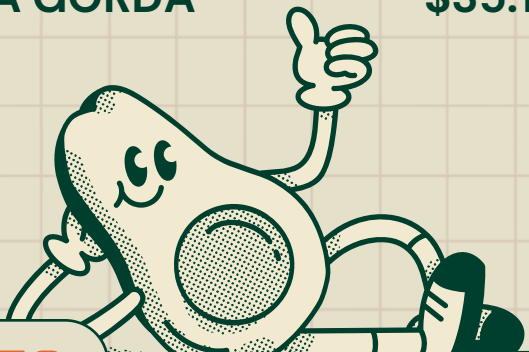
DE CERDO \$33.8

DE LENTEJA \$21

MINI QUIBBE \$31.6

MIXTO \$30.2

PUNTA GORDA \$35.1



AVES

PECHUGA A LA PARILLA \$35.7

PECHUGA LIMÓN Y PIMIENTA \$35.1

PECHUGA ENCEBOLLADA \$35.9

PARRILLAS

MEDIO POLLO A LA PARILLA \$34

LOMO DE CERDO \$36.3
Teriyaki o BBQ

CHURRASCO \$40.7
300gr en crudo

RELLENOS

REPOLLITAS (1/2 POR) \$14.6

REPOLLITAS (10 UNI) \$25

HOJAS DE PARRA (1/2 POR) \$16.2

HOJAS DE PARRA (10 UNI) \$27.5

BERENJENA \$6.2

TRADICIONAL ÁRABE

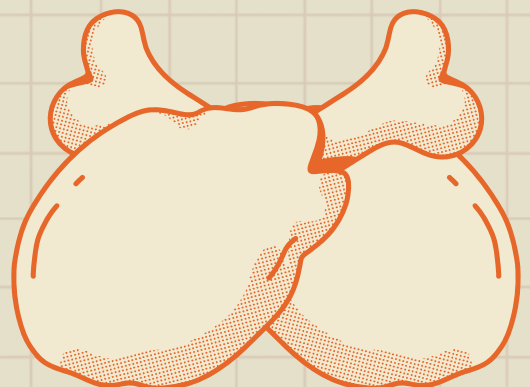
FALAFEL (1/2 PORCIÓN) \$15.6

TABBULE COMPLETO \$26.2

TABBULE (1/2 PORCIÓN) \$19.1

MARMAHON \$34.9

MEDIO MARMAHON \$24.1





MENÚ

Open Hours

CARNES

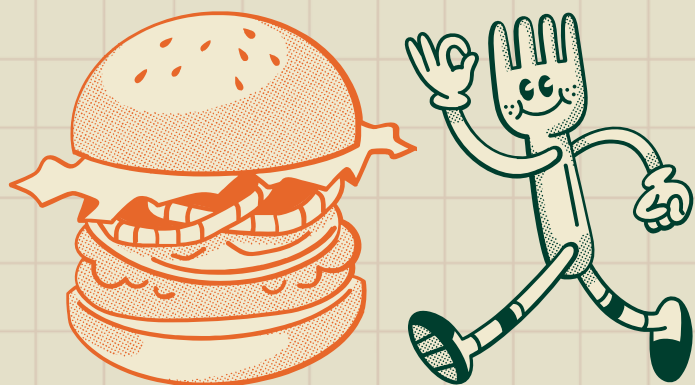
| | |
|--|--------|
| LOMO A LA PIMIENTA ÁRABE | \$47.5 |
| LOMO EN SALSA DE TAHINE ENCEBOLLADO | \$44.4 |
| STEAK CON ALMENDRAS Y TAHINE | \$51.6 |
| PUNTA GORDA | \$48.3 |

TAHINE

| | |
|---------------------|--------|
| GARBANZO | \$28.5 |
| GARBANZO (1/2 POR) | \$18.6 |
| BERENJENA | \$33.1 |
| BERENJENA (1/2 POR) | \$18.7 |
| ESPECIAL | \$35.9 |
| ESPECIAL (1/2 POR) | \$25.1 |

PESCADO

| | |
|--|--------|
| SALMÓN EN SALSA | \$54 |
| <i>Almendras, ajillo, finas hierbas, albaricoque, limón y pimienta</i> | |
| FILETE DE PESCADO | \$35.7 |
| <i>Almendras, ajillo, finas hierbas, albaricoque, limón y pimienta</i> | |



Deliciosos SHAWARMA

| | |
|--------|--------|
| QUIBBE | POLLO |
| \$19.8 | \$23.8 |
| MIXTO | CARNE |
| \$26.4 | \$29.2 |

HAMBURGUESA

| | |
|----------------|--------|
| FALAFEL | \$22.7 |
| CHEESEBURGUER | \$15.7 |
| BACON PARTY | \$20.1 |
| CHEESE & BACON | \$19.3 |
| NATIVA | \$18.9 |

PLATO MIXTO

| | |
|-------------------|--------|
| MIXTO VEGETARIANO | \$22.4 |
| MIXTO | \$26.3 |
| MIXTO ESPECIAL | \$32.6 |
| ESPECIAL | \$30.5 |
| VEGETARIANO | |



MENÚ

Open Hours

SANDWICHES

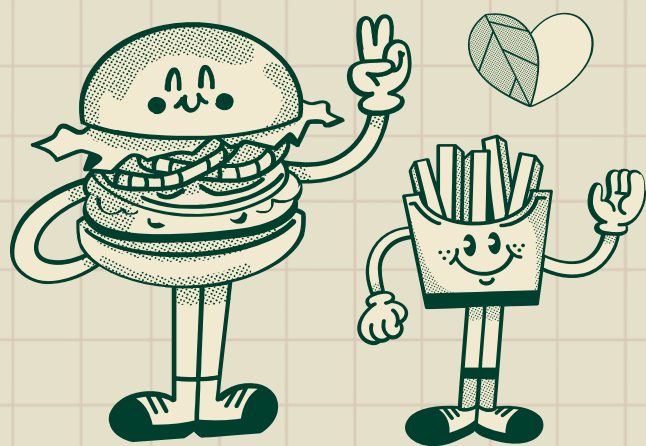
A partir de las 3.00p.m.

| | |
|----------------|--------|
| CLUB SANDWICH | \$24.4 |
| CRISPY CHICKEN | \$16.9 |

PIZZAS

A partir de las 3.00p.m.

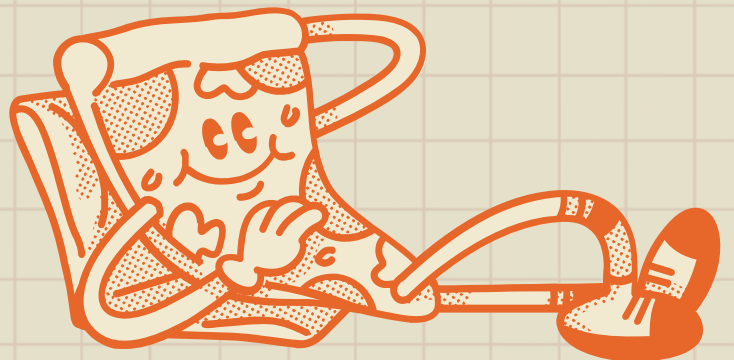
| | |
|-------------------------------|--------|
| TOCINETA Y CEBOLLA CAMELIZADA | \$15.9 |
| PIZZA CARBONARA | \$19.6 |
| PIZZA AMARANTE | \$15.5 |
| PIZZA TERRANOSTRA | \$18.8 |
| PIZZA CALICHE | \$19 |
| PIZZA OHANA | \$15.5 |



TARDES

A partir de las 3.00p.m.

| | |
|-------------------------|--------|
| PAPAS & PEPERONI | \$17.3 |
| PAPAS HOLLYWOOD | \$16.2 |
| PAPAS & CHORIZO ESPAÑOL | \$19.9 |



COMBOS

| | |
|--|--------|
| HAMBURGUESA, PAPAS Y GASEOSA | \$23.2 |
| HAMBURGUESA, PAPAS Y MALTEADA (Vainilla sin adiciones) | \$26.7 |
| BROWNIE Y CAFÉ AMERICANO | \$10.8 |

BEBIDAS

| | | | |
|--------------------|-------|-------------------|-------|
| AGUA CRISTAL 600ML | \$2.4 | SODA | \$5 |
| GASEOSA PET 400ML | \$5.4 | SODA MICHELADA | \$7.2 |
| HIT BOTELLA | \$4.4 | MILO FRAPPE | \$6.2 |
| HIT BOTELLA 500ML | \$4.4 | LIMONADA NATURAL | \$6 |
| TÉ HATSU | \$9.5 | LIMONADA CEREZADA | \$6.9 |
| TÉ HELADO | \$5 | LIMONADA | \$7.7 |
| | | MARACUMANGOCOCO | |



MENÚ

Open Hours

BROWNIES

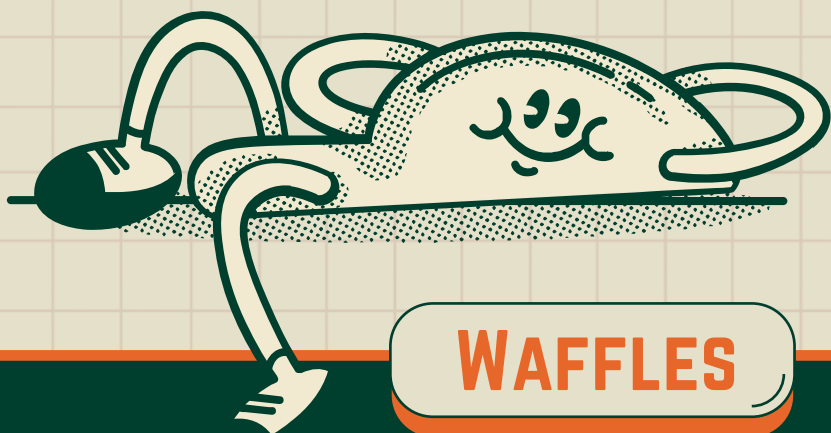
| | |
|--------------------|--------|
| BROWNIE | \$5 |
| BROWNIE DE LA CASA | \$13.2 |

MALTEADAS

| | |
|-------------------|--------|
| MALTEADA OREO | \$18.6 |
| MALTEADA BROWNIE | \$17 |
| MALTEADA SENCILLA | \$12.7 |

CAFÉS

| | |
|---------------------|--------|
| CAFÉ FRÍO AREQUIPE | \$13.4 |
| CAFÉ FRÍO CHOCOLATE | \$13.8 |



WAFFLES

| | |
|------------------------------|--------|
| WAFFLE CON FRUTOS ROJOS | \$16.1 |
| WAFFLE DE AREQUIPE | \$15.7 |
| WAFFLE CON CREMA DE AVELLANA | \$16.1 |
| WAFFLE VOLCANO | \$16.4 |

Deliciosos POSTRES

GALLETAS CHIPS

\$4.2

COOKIE PIE

\$26.9

PORC TORTA DE ZANAHORIA

\$7.5

